

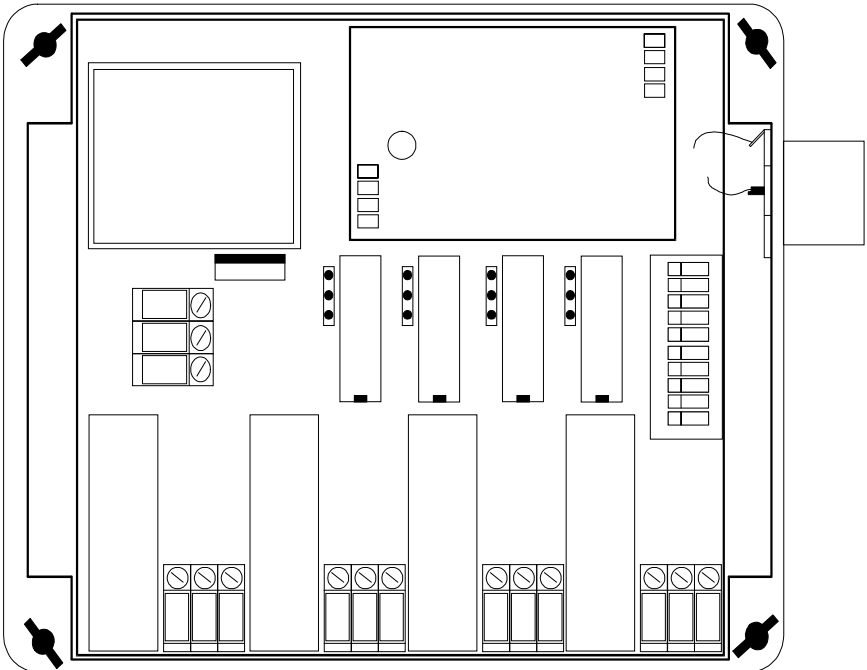
IRAB Mottagare

sida 2-5

Tele Radio AB Mottagare

sida 6

# Installation of receiver type smd 700



**4 RELAY FUNCTIONS / 12-24 VAC/DC**  
**PCB TYPE NO: LWEG 4L**

## Installation:

Install the receivers in a protected area. Avoid installing the receiver where it is exposed to big temperature differences. If the receiver is installed in a vehicle the cabin is a good place.

Do not install the receiver near cables that have a voltage of 220/380 VAC. The distance to these cables should not be less than 20 cm to avoid disturbances with low range as consequence.

Screw the receiver in a place so that the cable component holes are turned down.

If a rod aerial is installed directly on the box an angular contact should be used between the contact on the box and the aerial. From an angle with the aerial of max 45 degrees from the wall. If the receiver is installed on a tinplate wall.

If an outer aerial with cable is to be attached to the receiver rod aerial, the angular contact is changed to a T-contact.

Every receivers is armed with one, two, three or four changing free potential relay contacts. These can be loaded with maximum 10A/220 VAC or 5A 12-24 VDC.

When they are connected with continuous voltage they should not be loaded with more than 5A.

Receiver 7344/7744 is equipped with one relay function, receiver 7345/7745 is equipped with two relay functions, receiver 7346/7746 is equipped with three relay functions, receiver 7347/7747 is equipped with four relay functions.

These receivers are to be connected with 12-24 VAC./DC

The connection with the receiver, see fig. 1. Make sure that the right supply voltage is connected to the receiver.

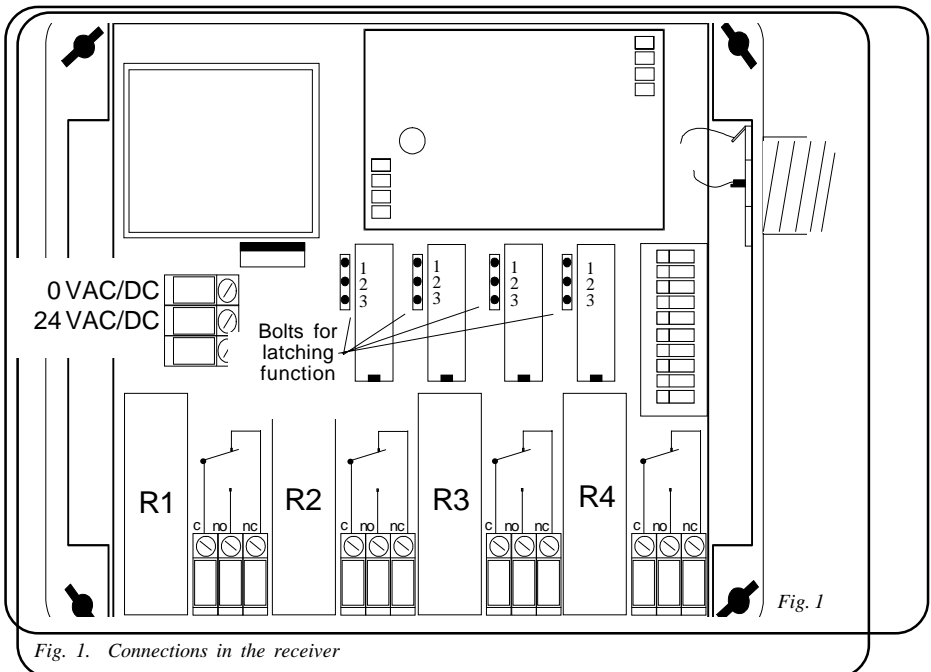


Fig. 1. Connections in the receiver

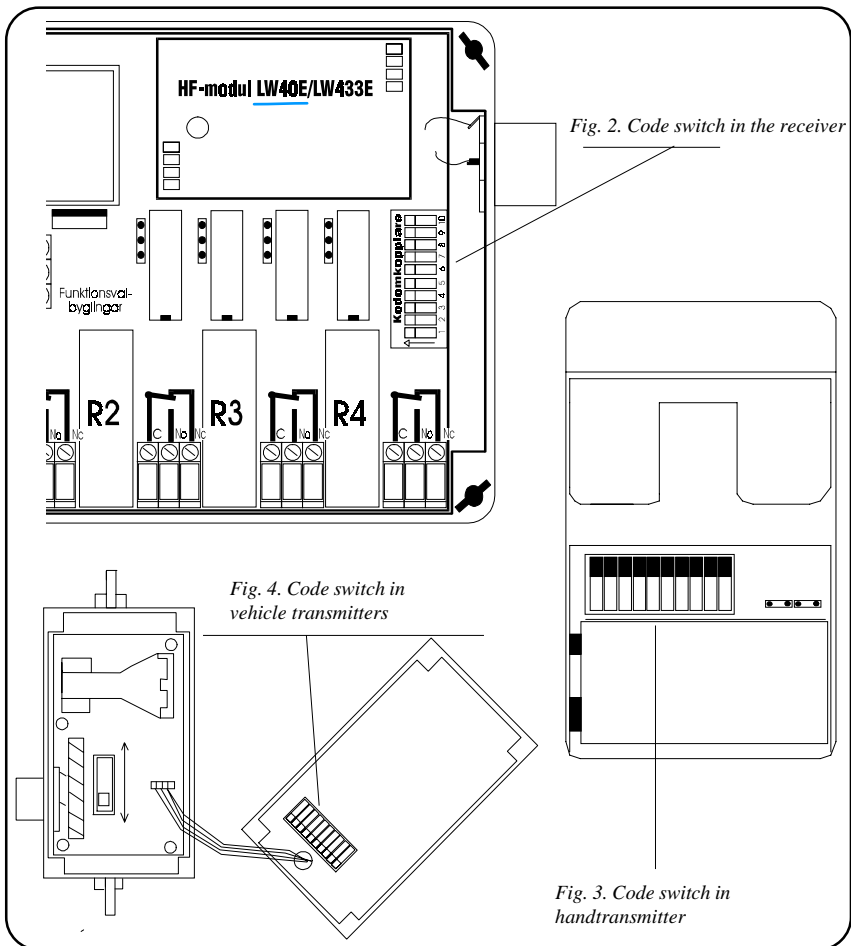
## Coding of the receiver:

Coding of the receiver can be done in three different ways depending on which type of receiver that is to be used.

### 1) Coding of 1-channelled receivers together with 1-channelled hand-transmitters or 1-channelled vehicle-transmitters without handle:

The receivers and the transmitters code converter are the same. The code converters placement in the receiver are shown in fig.2.

Example: If the transmitters code converter 1,5,9 and 10 are turned "ON" the opposite converter is to be turned "ON" in the receiver.



## 2) Coding of 1-channelled receivers together with transmitters with two, three or four buttons:

To get a 1-channelled receiver to work on button two, three or four from a transmitter, one or two bolts are to be loosened in the receiver. Where about they are placed in the receiver is shown in fig. 6. To get the receiver to work from button two, bolt "B" is loosened. To get the receiver to work from button three, bolt "A" is loosened and to get the receivers to work from button four, both bolt "A" and "B" are loosened. Normally the receiver is always programmed to work from button one, then both of the bolts are installed. See diagram 1.

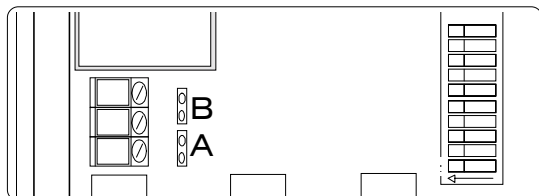


Fig. 6

Button used	Bolts to be loosened
1	None
2	B
3	A
4	A & B

Diagram 1

## 3) Coding of 1-channelled receivers together with transmitters with channel converters:

When the receiver is to be used with a vehicle-transmitter with tuner or hand-transmitter with thumb wheel switch the 10-pole code converter is programmed as followed. The first six converters in the receiver are to be the same as the six that are in the transmitter. If the transmitters converter number two and four are "ON", the converters two and four in the receiver are also to be put "ON". The remaining four converters in the receiver (7,8,9 and 10) are programmed as seen in diagram 2.

Transmitter turner in pos.	Codeswitch programmed in "on"
1	10
2	9
3	9 & 10
4	8
5	8 & 10
6	8 & 9
7	8, 9 & 10
8	7
9	7 & 10
0	None

Diagram 2

### Latching relay functions

The receivers can be delivered with latching relay functions. This function must be specified when ordered.

When a relay is activated on the receiver, the relay is drawn until the receiver gets a new signal. Bolts are installed in every relay to change function between latching and instantaneously-operating relay functions. See fig.5 for change of relay functions.

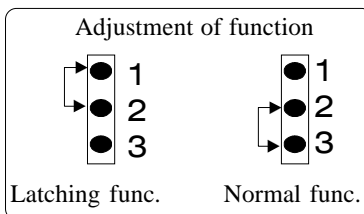
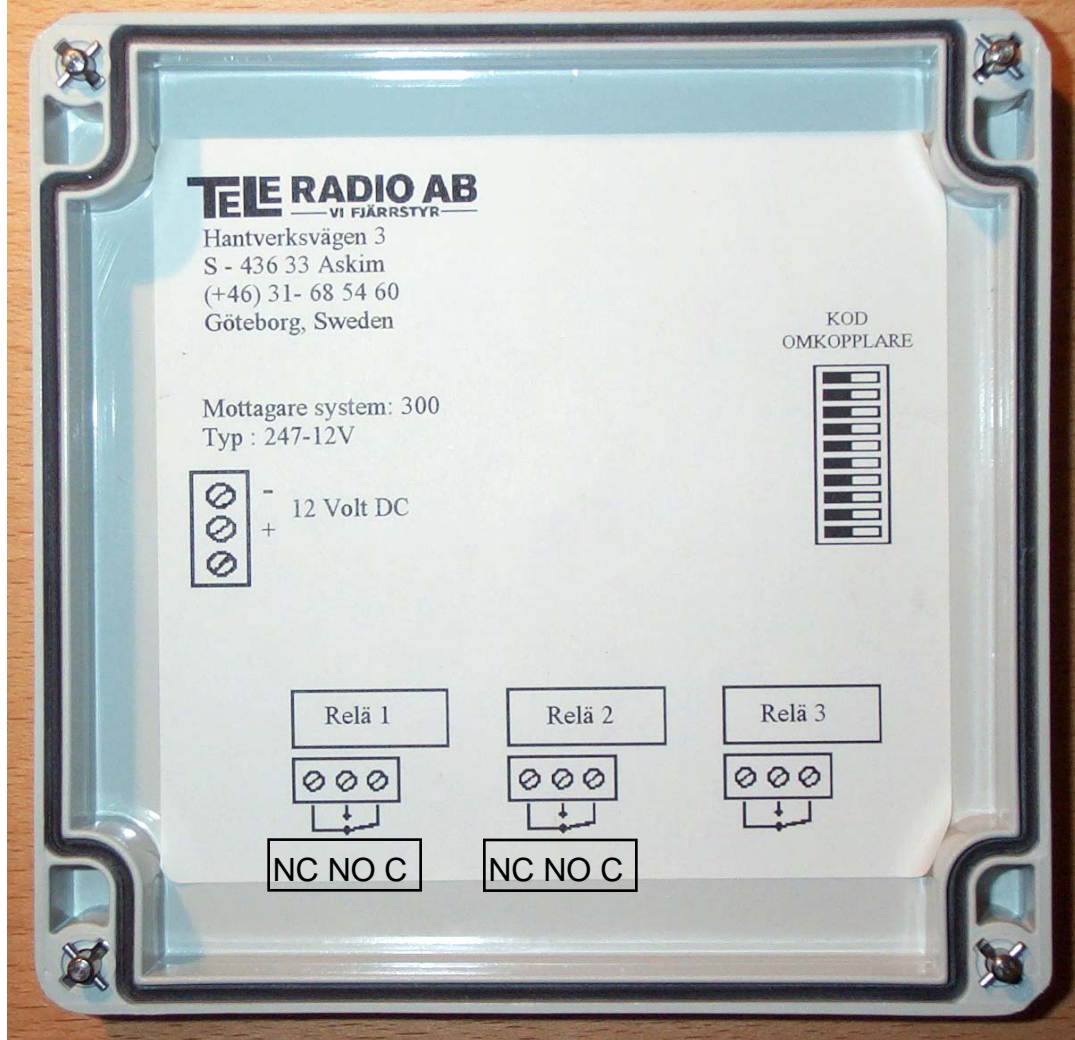
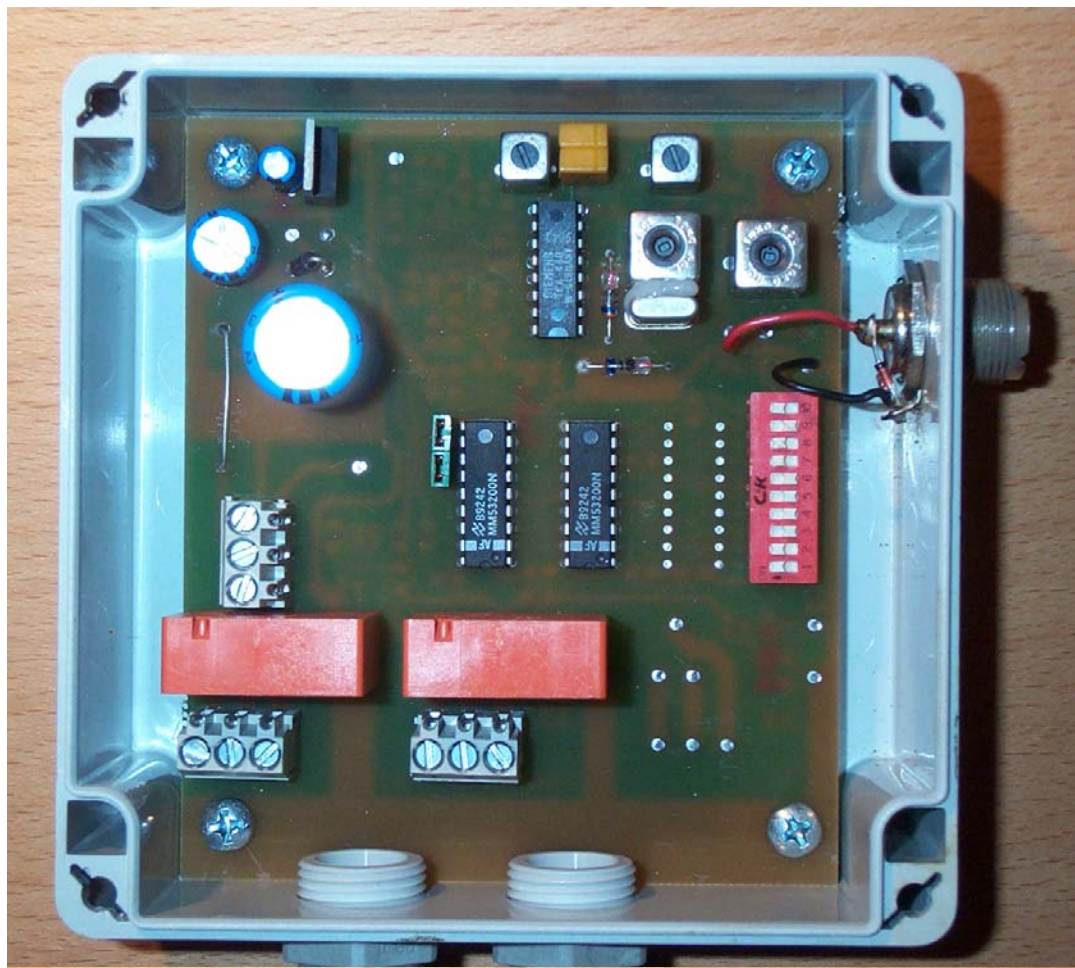


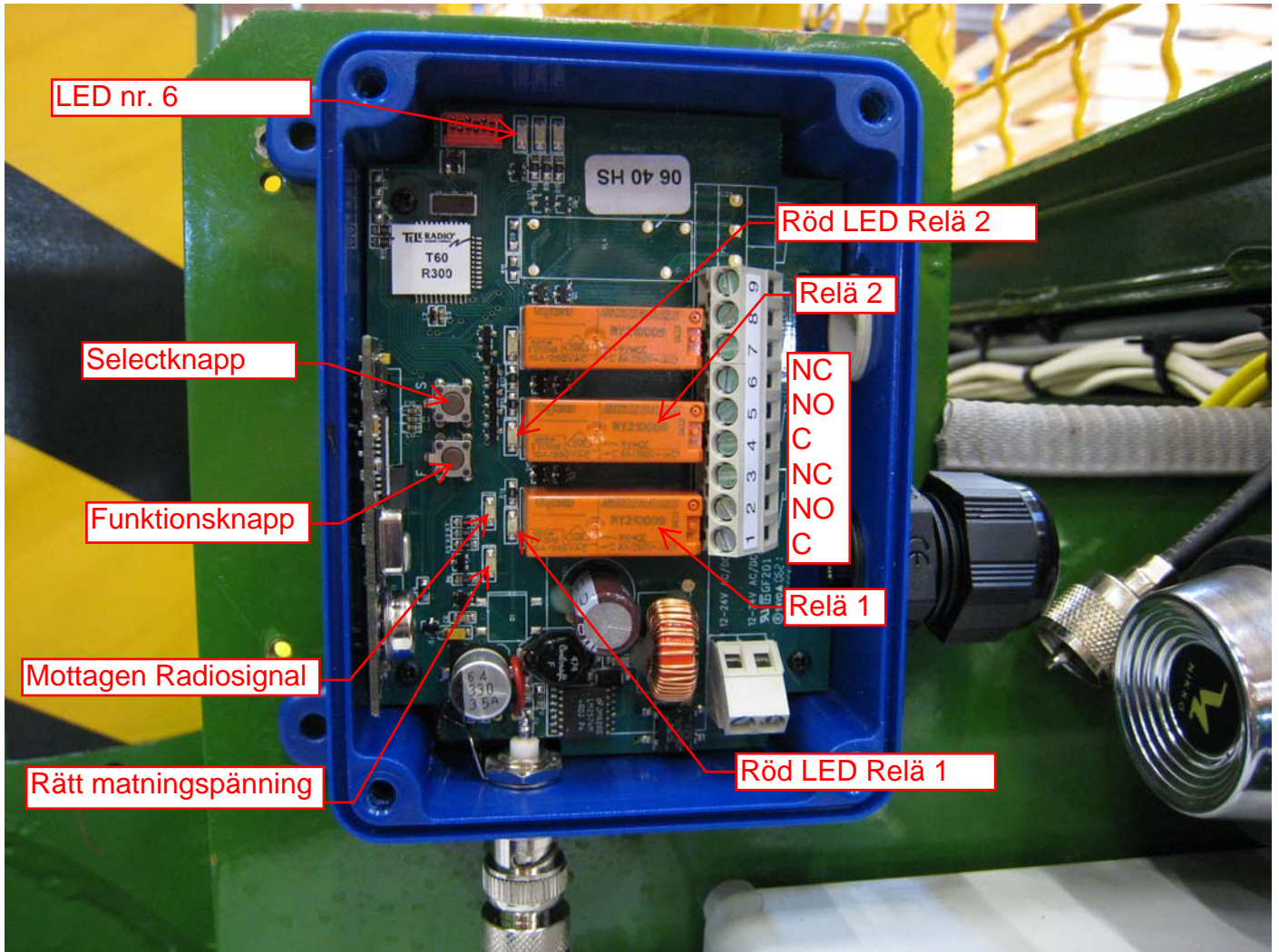
Fig. 5

*The receivers are not delivered with this function as standard.*

If any technical questions arise during installation please feel free to contact our technicians in Sweden, Lysekil.







### Komplettering av 300 manualen för den nya 300 mottagaren T300RX-03x

Mottagaren fungerar ej med sändare av typ T60 och T20.

#### För att programmera ihop mottagaren med en sändare gör följande:

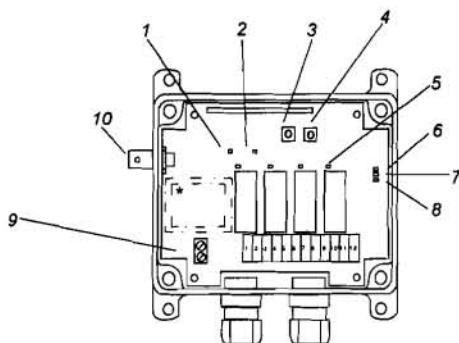
- Ställ in önskad kod på kodomkopplaren i sändaren.
- Skruva loss locket på mottagaren.
- Tryck en gång på funktionsknappen för självinläring av kod.
- Bekräfta val med selectknappen.
- Tryck därefter ytterligare en gång på selectknappen.
- Lär in sändarens kod genom att hålla ner en tryckknapp på sändaren tills röd diod nr 6 blinkar.

Observera att mottagaren endast kan lära in en sändare. Lärs flera sändare in raderas tidigare sändare programmerade i mottagaren.

För att programmera en 300-30-R, ändra vredets läge och programmera som ovan.

#### För att radera sändare från mottagaren gör följande:

- Tryck en gång på funktionsknappen.
- Tryck en gång på selectknappen.
- Tryck och håll därefter selectknappen intryckt i ca 6 sekunder.



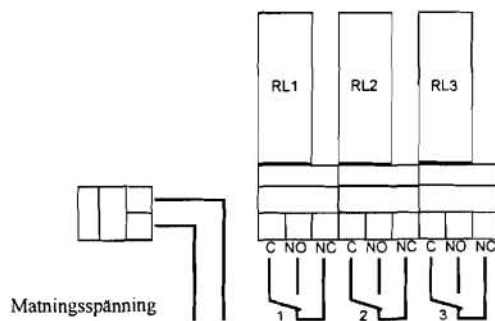
- |               |   |
|---------------|---|
| 1. Gul LED.   | Lyser när mottagaren har korrekt matningsspänning.              |
| 2. Grön LED.  | Lyser när mottagaren tar emot radiosignal.                      |
| 3.            | Funktionsknapp.   |
| 4.            | Selectknapp.  |
| 5. Röd LED.   | Varje relä har en lysdiod som lyser när reläet drar.            |
| 6. Röd LED.   |   |
| 6.1. Lyser.   | - Inläring av kod möjlig.                                       |
| 6.2. Blinkar. | - Justerbar kod inlärd.   |
| 7. Gul LED.   | Blinkar när någon av reläerna har växlande funktion.            |
| 9.            | Inkopplingsplint för spänning.                                  |
| 10.           | BNC kontakt för antenn. Adapter för befintlig antenn medföljer. |



### För att programmering ett specifikt relä gör följande:

- Tryck en gång på funktionsknappen för självinläring av kod.
- Bekräfta val med selectknappen.
- Med hjälp av funktionknappen är det nu möjligt att stega fram till ett specifikt relä. Röd lysdiod aktiveras över valt relä.
- Bekräfta val med selectknappen
- Håll inne den knapp på sändaren som ska läras in på reläet till dess att diod nr 6 blinkar.

### Inkoppling av mottagare T300RX-03x



Observera att spänningsplinten är polaritetsokänslig.

Matningsspänningen till T300RX-03A är 12/24VAC/DC, T300RX-03B är 230V.

Med mottagaren följer en adapter som gör det möjligt att använda en befintlig UHF antenkontakt till mottagarens BNC kontakt.